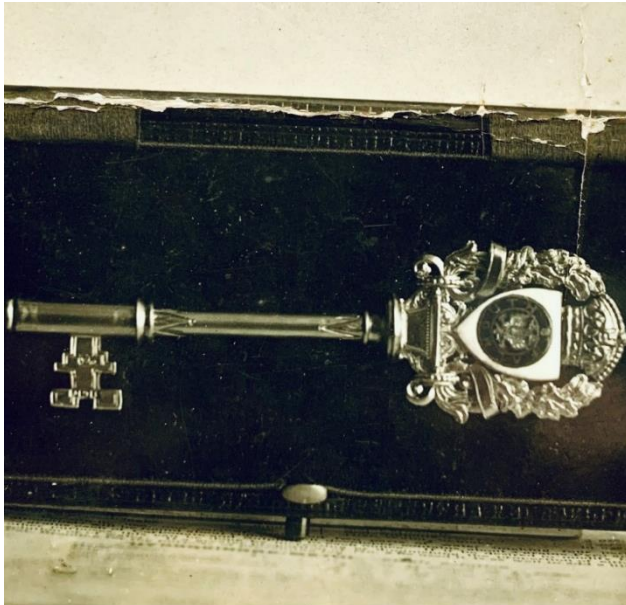


22. FHA. OPENING OF THE PRINCESS PAVILION

17 JULY 2024

Facebook: 4 Likes 0 Comments 1 Shares

Instagram: 4 Likes



...and now, the final part of the story of the Gyllyngdune Estate!

Four years after the Gyllyngdune Gardens were made accessible to the public, the official opening of The Princess Pavilion took place.

As part of the opening ceremony on 19th April 1911, the well-known local builder and contractor for the construction of the building, Ernest H. Moss, presented this key to H.R.H. Princess Alexander of Teck, one of Queen Victoria's granddaughters.

This wasn't the first Royal Family visitor - a year earlier in 1910, the first Falmouth Spring Flower Show had been opened by Queen Victoria's second daughter, Princess Christian.

Two years later, a very different visitor was guest of honour at the Falmouth Spring Flower Show ... the Antarctic explorer Sir Ernest Shackleton.

He had been invited by his friend Sydney Goldman, who wanted to help Shackleton in raising money for his proposed 1914-1918 Imperial Trans-Antarctic Expedition – an attempt to make the first land crossing of the Antarctic continent.

It was on this expedition that his ship Endurance became trapped in pack ice and later sank, but where every member of the crew survived the perilous conditions, largely as a result of the outstanding leadership of their expedition leader – Sir Ernest Shackleton.

Photograph: Roger Davy Collection.